

Gallery

Elizabeth Blackadder
Etchings and Screenprints 2011 - 2014





Above from top left (cw):

Wild Flowers, 2013, screenprint in an edition of 65, 89.5 x 72.5 cm.

Tulips, 2012, screenprint in an edition of 80, 67 x 75 cm.

Irises, 2012, etching in an edition of 50, image size 69 x 48 cm, paper size 82 x 62 cm.

Front: *Wild Flower*, 2014, screenprint in an edition of 80, 52 x 72 cm..



Above from top left (cw):

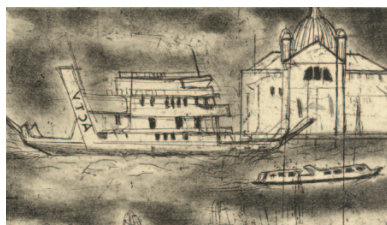
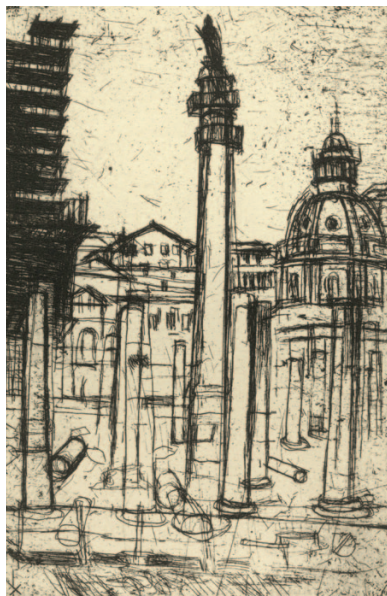
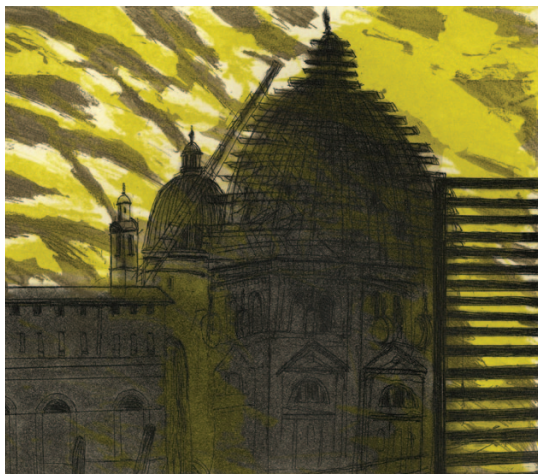
Four Fish, 2013, screenprint in an edition of 80, image size 30 x 39 cm, paper size 53 x 42.5 cm.

Two Snapper, 2014, screenprint in an edition of 40, image size 20 x 15 cm, paper size 34 x 30 cm.

Seafood Medley, 2012, screenprint in an edition of 80, 74 x 87 cm.

Fish Market - Venice, 2012, etching in an edition of 50, image size 20 x 29 cm, paper size 35 x 42 cm.

Langoustine, 2012, etching in an edition of 50, image size 34 x 35 cm, paper size 52 x 56 cm.



Above from top left (cw):

Venice: Salute in a Thunderstorm, 2011, etching in an edition of 50, image size 39 x 40 cm, paper size 49 x 50 cm.

Rome, 2013, etching in an edition of 40, image size 15 x 10 cm, paper size 40 x 32 cm.

Venice, 2013, etching in an edition of 40, image size 17 x 10 cm, paper size 37 x 34 cm.

Venice Cats II, 2013, etching in an edition of 40, image size 8 x 13 cm, paper size 37 x 34 cm.

Munida Rugosa, 2013, etching in an edition of 40, image size 17 x 10 cm, paper size 36 x 34 cm.

Venice Dog, 2013, etching in an edition of 40, image size 15 x 10 cm, paper size 37 x 34 cm.



Top: *Iris, Lilies, Tulips*, 2013, etching in an edition of 40, image size 37 x 41.5 cm, paper size 52 x 72 cm.
Below: *Louis in a Box*, 2013, etching in an edition of 50, image size 36 x 18 cm, paper size 50 x 56 cm.

Back page: *Louis*, 2011, etching in an edition of 50, image size 30 x 22 cm, paper size 50 x 56 cm.



Dame Elizabeth Blackadder RA RSA RSW is arguably one of the UK's best loved and highly regarded living artists, noted for portraying flowers, cats, Japanese gardens & still life compositions. She employs a unique style which is both contemporary and striking.

As a respected printmaker for over five decades, Blackadder has experimented with a range of printmaking media including lithography, etching, aquatint, dry point, woodcut and screenprint. She has worked with Master Printers at Glasgow Print Studio since 1985 when she was originally invited by Director John Mackechnie to work on a series of etchings with him. Over the past fourteen years the studio has helped to create over 100 lithographs, etchings, screenprints and woodcuts with Elizabeth.

Blackadder has received a number of awards, including the Guthrie Award, Royal Scottish Academy (1962) and the Pimms Award for Work on Paper (Royal Academy, 1983). Blackadder was elected Member of the Royal Scottish Academy in 1972, a Royal Academician in 1976 and a Member of The Royal Glasgow Institute of Fine Arts in 1983. She is an Honorary Member of the Royal West of England Academy, the Royal Watercolour Society and the Royal Society of Painter-Printmakers, and an Honorary Fellow of the Royal Incorporation of Architects in Scotland and the Royal Society of Edinburgh. She has received Honorary Doctorates from four Scottish universities. In 2001 she was appointed Her Majesty's Painter and Limner in Scotland. Blackadder lives and works in Edinburgh.

Glasgow Print Studio, Trongate 103, Merchant City, Glasgow G1 5HD

Gallery opening hours: Monday - Saturday 10am - 5.30pm, Sunday 12 - 5.00pm.

Admission free.

www.glasgowprintstudio.co.uk



Glasgowlife[™]



anCnoc
HIGHLAND SINGLE MALT
SCOTCH WHISKY

Glasgow Print Studio

Gallery

Elizabeth Blackadder Etchings and Screenprints

Price List of Illustrated Works

Flowers:

Iris, 2012, etching in an edition of 50. £2200 + VAT

Iris, Lilies, Tulips, 2013, etching in an edition of 40. £1200 + VAT

Tulips, 2012, screenprint in an edition of 80. £1800 + VAT

Wild Flower, 2014, screenprint in an edition of 80. £1200 + VAT

Wild Flowers, 2013, screenprint in an edition of 65. £2000 + VAT

Marine:

Fish Market - Venice, 2012, etching in an edition of 50. £600 + VAT

Four Fish, 2013, screenprint in an edition of 80. £800 + VAT

Langoustine, 2012, etching in an edition of 50. £850 + VAT

Seafood Medley, 2012, screenprint in an edition of 80. £1500 + VAT

Two Snapper, 2014, screenprint in an edition of 40. £400 + VAT

Cats:

Louis, 2011, etching in an edition of 50. £1000 + VAT

Louis in a Box, 2013, etching in an edition of 50. £1000 + VAT

Landscapes & Monochrome Etchings:

Munida Rugosa, 2013, etching in an edition of 40. £500 + VAT

Rome, 2013, etching in an edition of 40. £550 + VAT

Venice, 2013, etching in an edition of 40. £550 + VAT

Venice Cats II, 2013, etching in an edition of 40. £550 + VAT

Venice Dog, 2013, etching in an edition of 40. £550 + VAT

Venice: Salute in a Thunderstorm, 2011, etching in an edition of 50. £600 + VAT

Glasgow Print Studio, Trongate 103, Merchant City, Glasgow G1 5HD

Gallery opening hours: Monday - Saturday 10am - 5.30pm, Sunday 12 - 5.00pm.

Admission free.

www.glasgowprintstudio.co.uk